



## 47 Caravel Close

Grays, RM16 6QB

Guide price £270,000





# 47 Caravel Close

Grays, RM16 6QB

Guide price £270,000



## Entrance

Entrance door, open to

## Living Room

12' x 12' (3.66m x 3.66m)

Window to side, radiator, stairs to first floor.

## Kitchen

8'10 x 5'5 (2.69m x 1.65m)

Window to side. Range of fitted storage units with an integrated electric oven. Space and plumbing for washing machine and fridge/freezer. Work surfaces incorporate sink unit and gas hob. Understairs storage cupboard.

## First floor

### Landing

5'10 x 3'9 (1.78m x 1.14m)

Stairs to ground floor.

### Bedroom

11'5 x 8'11 (3.48m x 2.72m)

Window to side, radiator, access to loft.

### Shower Room

6'2 x 5'11 (1.88m x 1.80m)

Window to side, shower cubicle, close coupled WC, wash hand basin.

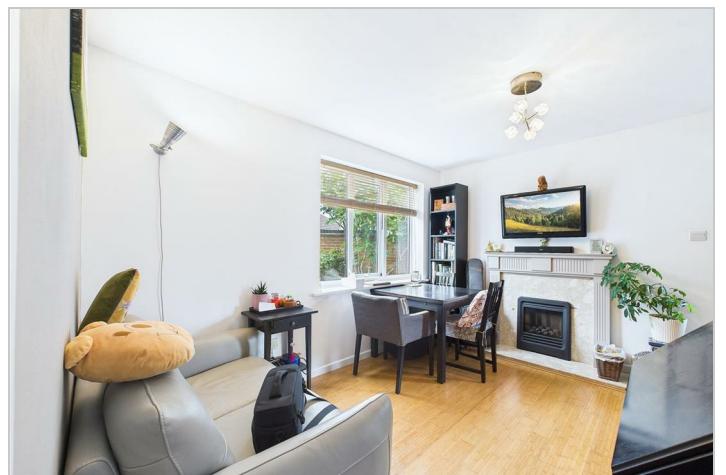
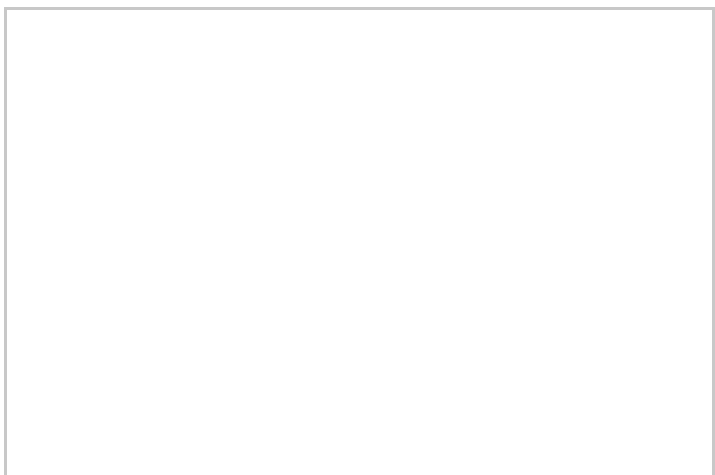
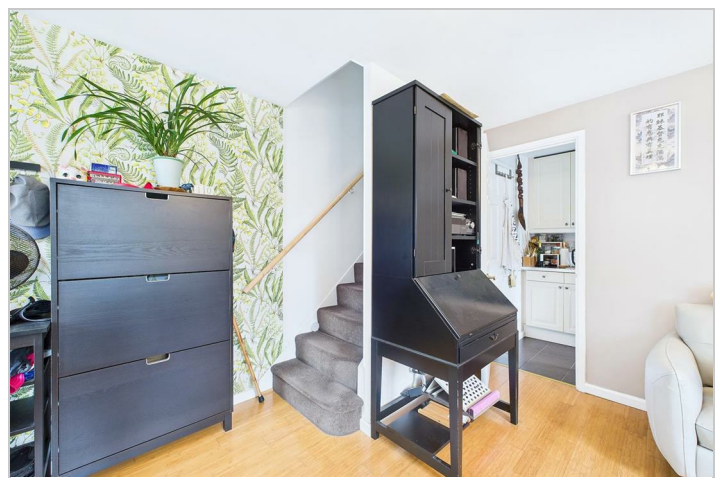
## Exterior

### South facing Rear Garden

Mainly laid to lawn with fencing to boundaries. Timber Shed, Access to front.

### Car Port







Road Map



Hybrid Map



Terrain Map



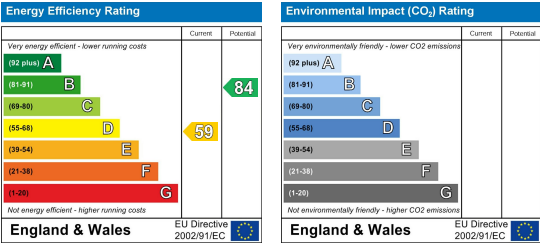
Floor Plan



Viewing

Please contact our Chelmsford Office on 01245 330764 if you wish to arrange a viewing appointment for this property or require further information.

Energy Efficiency Graph



These particulars, whilst believed to be accurate are set out as a general outline only for guidance and do not constitute any part of an offer or contract. Intending purchasers should not rely on them as statements of representation of fact, but must satisfy themselves by inspection or otherwise as to their accuracy. No person in this firms employment has the authority to make or give any representation or warranty in respect of the property.